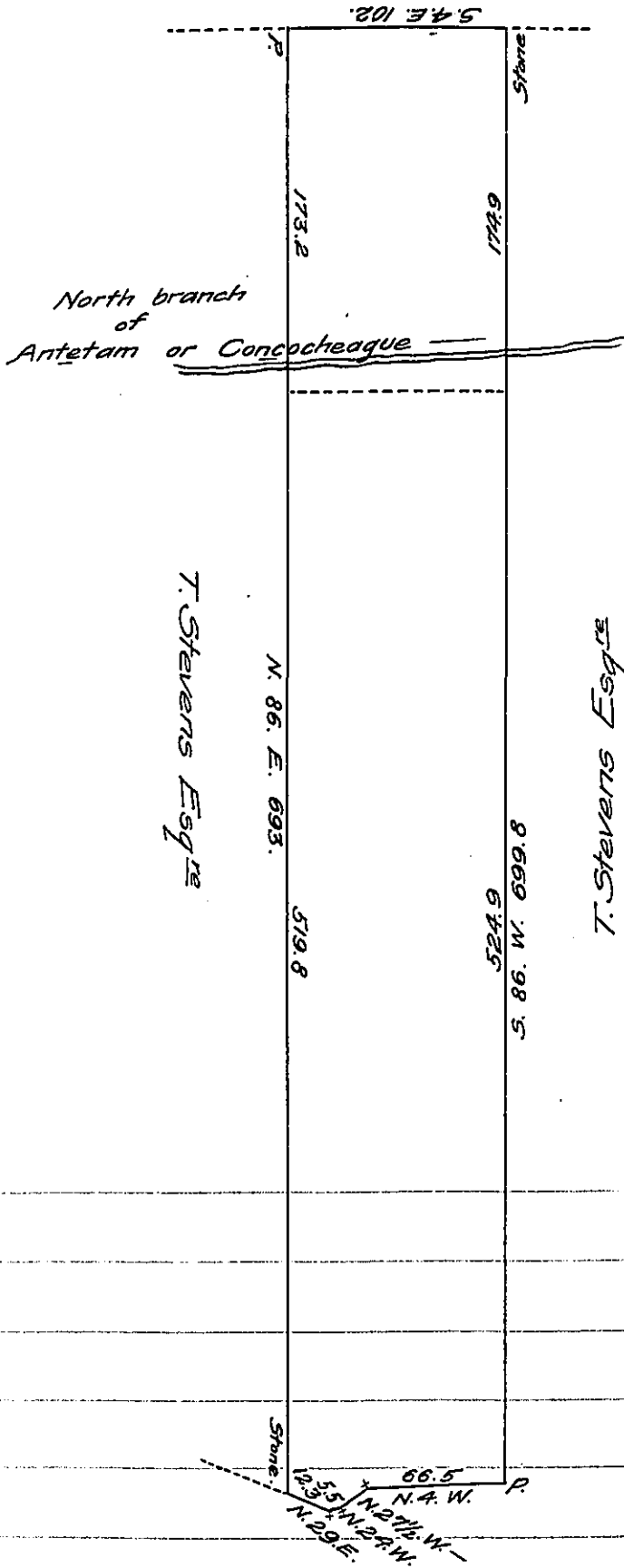


Franklin County line



Warrant granted 17<sup>th</sup> October  
 1751 to Sebastian Graffe for 100<sup>ac</sup>  
 on the North branch of Antetam  
 Creek between James Lindsay &  
 Thomas Witherspoon

The whole of the above Tract is an Interference of a Tract of  
 419<sup>ac</sup> & all<sup>se</sup> surveyed on warr<sup>t</sup> for 400<sup>ac</sup> granted to John Graff  
 dated 3<sup>d</sup> March 1794 — situate in Franklin Township Adams County  
 now owned by Thaddeus Stevens Esq<sup>re</sup> — Witness my hand —

Jn<sup>o</sup> L. Gubernator

October 4<sup>th</sup> 1838.

IN TESTIMONY that the above is a copy of the original remaining on file in  
 the Department of Internal Affairs of Pennsylvania, made  
 conformably to an Act of Assembly approved the 16th day of  
 February, 1833, I have hereunto set my Hand and caused  
 the Seal of said Department to be affixed at Harrisburg,  
 this thirteenth day of November 1908.

*Nancy Howard*  
 Secretary of Internal Affairs.